



LINCOLNSHIRE HEALTH AND WELLBEING BOARD

Open Report on behalf of Derek Ward, Director of Public Health

Report to	Lincolnshire Health and Wellbeing Board
Date	12 March 2024
Subject	Pharmaceutical Needs Assessment 2022 – Supplementary Statement March 2024

Summary:

The Health and Wellbeing Board (HWB) has a statutory responsibility to produce a pharmaceutical needs assessment (PNA) every three years. Lincolnshire's current PNA was approved in September 2022.

Since publication, there have been several changes to the availability of pharmaceutical services. Under such circumstances, the HWB is permitted to publish a supplementary statement detailing the changes without the need to undertake a full review.

The purpose of this report is to ask the HWB to approve a supplementary statement; attached in Appendix A.

Actions Required:

The Health and Wellbeing Board is asked to approve the publication of the Pharmaceutical Needs Assessment 2022 Supplementary Statement, presented in Appendix A.

1. Background

Section 128A of the National Health Service Act 2006 (NHS Act 2006) requires the Health and Wellbeing Boards (HWBs) to assess the need for pharmaceutical services in its area and to publish a statement of its assessment every three years. The 2013 Regulations set out the minimum information that must be contained within a Pharmaceutical Needs Assessment (PNA) and outlines the process that must be followed in its development. The Regulations also refers to the circumstances where a HWB may need to produce a new PNA sooner than the usual three-year cycle, or when a supplementary statement may/must be published.

Supplementary Statements enables the HWB to identify and publish details of any changes to the availability of pharmaceutical services without the need to undertake a full review. Supplementary Statements cannot provide updates on pharmaceutical need, this can only be done through the PNA. The updated information contained in a Supplementary Statement supersedes some of the original information contained in the PNA and should therefore be read in conjunction with the published assessment.

Lincolnshire's current PNA was approved by the HWB in September 2022 and is published on the [Lincolnshire Health Intelligence Hub](#) (LHIH). The next PNA is not due to be review and published until 2025.

Usually, changes to the current PNA will have been relatively minor, for example changes in ownership, and have not warranted the need to be brought to the HWB for approval. The supplementary statement process is managed by Public Health, with details published alongside the PNA on the LHIH.

Public Health has been made aware of several changes which could impact on the access and availability of community pharmacy services in Lincolnshire that require the HWB to agree changes to the PNA. A draft supplementary statement detailing these changes is provided in Appendix A.

Some changes of note include:

- Despite the number of community pharmacies increasing by one in East Lindsey and one in West Lindsey, both Lincoln and South Holland have lost two pharmacies. This means the overall number of community pharmacies in Lincolnshire has fallen from 117 to 115.
- The number of community pharmacies open for 100 hours per week has fallen from 11 to 1, only North Kesteven now has a 100-hour pharmacy. This change is primarily due to amendments to the 2013 NHS (Pharmaceutical and Local Pharmaceutical Services) regulations which came into force on 25 May 2023. Under the new provisions there is the ability for:
 - Integrated Care Boards to remove the '100 hours condition' from those pharmacies that applied under regulation 13(1)(b) following submission of a valid application.
 - pharmacy contractors to apply to reduce the core opening hours of their 100 hours pharmacy to between 72 and 100 hours.
- The number of community pharmacies open on a Saturday has fallen from 97 to 94, and open on Sunday, from 20 to 17. However, not all districts have seen a reduction. The table below

summarises changes by district. South Holland is the only district which has no provision on a Sunday.

Area	Saturday		Sunday	
	2022 PNA	Revised number	2022 PNA	Revised number
Boston	8	6	1	2
East Lindsey	17	19	2	3
Lincoln	18	16	5	4
North Kesteven	16	17	4	4
South Holland	11	10	2	0
South Kesteven	17	16	4	3
West Lindsey	10	10	2	1
Lincolnshire	97	94	20	17

Source: NHSEI

In line with statutory guidance, the supplementary statement has to be based on fact, without offering an assessment of the levels of pharmaceutical need as a result of the changes; understanding this will require a full PNA review.

The next PNA is due to be published by 1 October 2025, and so we propose publishing the supplementary statement on the assumption that the process to begin the next PNA from September 2024.

2. Conclusion

The HWB has a statutory duty to undertake a PNA at least every three years. The guidance allows the HWB to issue supplementary statements on any changes to the availability of pharmaceutical services without the need to undertake a full review.

The HWB is asked to approve the supplementary statement, attached as Appendix A, enabling publication on the LHIH, alongside the PNA 2022.

3. Joint Strategic Needs Assessment and Joint Local Health & Wellbeing Strategy

The Council, NHS Lincolnshire Integrated Care Board and the Lincolnshire Integrated Care Partnership must have regard for the Joint Strategic Needs Assessment (JSNA) and Joint Local Health and Wellbeing Strategy (JLHWS).

Evidence from the JSNA was used to inform the analysis used in the PNA 2022. The PNA complements the JSNA, and forms part of the evidence base for the present and future needs of pharmaceutical services in Lincolnshire. The final draft PNA refers the reader to the JHWS and the JSNA for up to date information.

4. Consultation

Not applicable.

5. Appendices

These are listed below and attached at the back of the report	
Appendix A	Supplementary Statement to Lincolnshire Health and Wellbeing Board's Pharmaceutical Needs Assessment 2022

6. Background Papers

Document	Where it can be accessed
Pharmaceutical Needs Assessments: Information pack for local authority health and wellbeing boards. Department of Health and Social Care (Oct 2021)	Pharmaceutical needs assessments: information pack - GOV.UK (www.gov.uk)
Guidance on the NHS (pharmaceutical and local pharmaceutical services) (amended) regulations 2023	https://www.england.nhs.uk/long-read/guidance-on-the-nhs-pharmaceutical-and-local-pharmaceutical-services-amendment-regulations-2023/

This report was written by Alison Christie, Programme Manager, who can be contacted on alison.christie@lincolnshire.gov.uk



Supplementary Statement to Lincolnshire Health and Wellbeing Board's Pharmaceutical Needs Assessment

Date Pharmaceutical Needs Assessment published – September 2022

Date Supplementary Statement issued – March 2024

The Regulations state that Supplementary Statements can provide updates to the Pharmaceutical Needs Assessment only in relation to changes in the availability of pharmaceutical services. Supplementary Statements cannot provide updates on pharmaceutical need. This can only be achieved through a review of the Pharmaceutical Needs Assessment. The following pharmaceutical services currently contained within the Pharmaceutical Needs Assessment have been identified as needing updating. This updated information supersedes some of the original information within the PNA and should be read in conjunction with that document.

Changes to Lincolnshire Pharmaceutical Needs Assessment 2022

Page 10 | Paragraph 6 | Sentence 1 [text updated]:

“There are 115 community pharmacies in the Lincolnshire HWB area (as of 31st January 2024).”

Page 43 | Paragraph 3.1 | Sentence 1 [text updated]:

“There are 115 community pharmacies and one DAC in Lincolnshire (as of 31st January 2024) serving a resident population of 768,352 (Census 2021) which equates to 15.0 pharmacies per 100,000 population.”

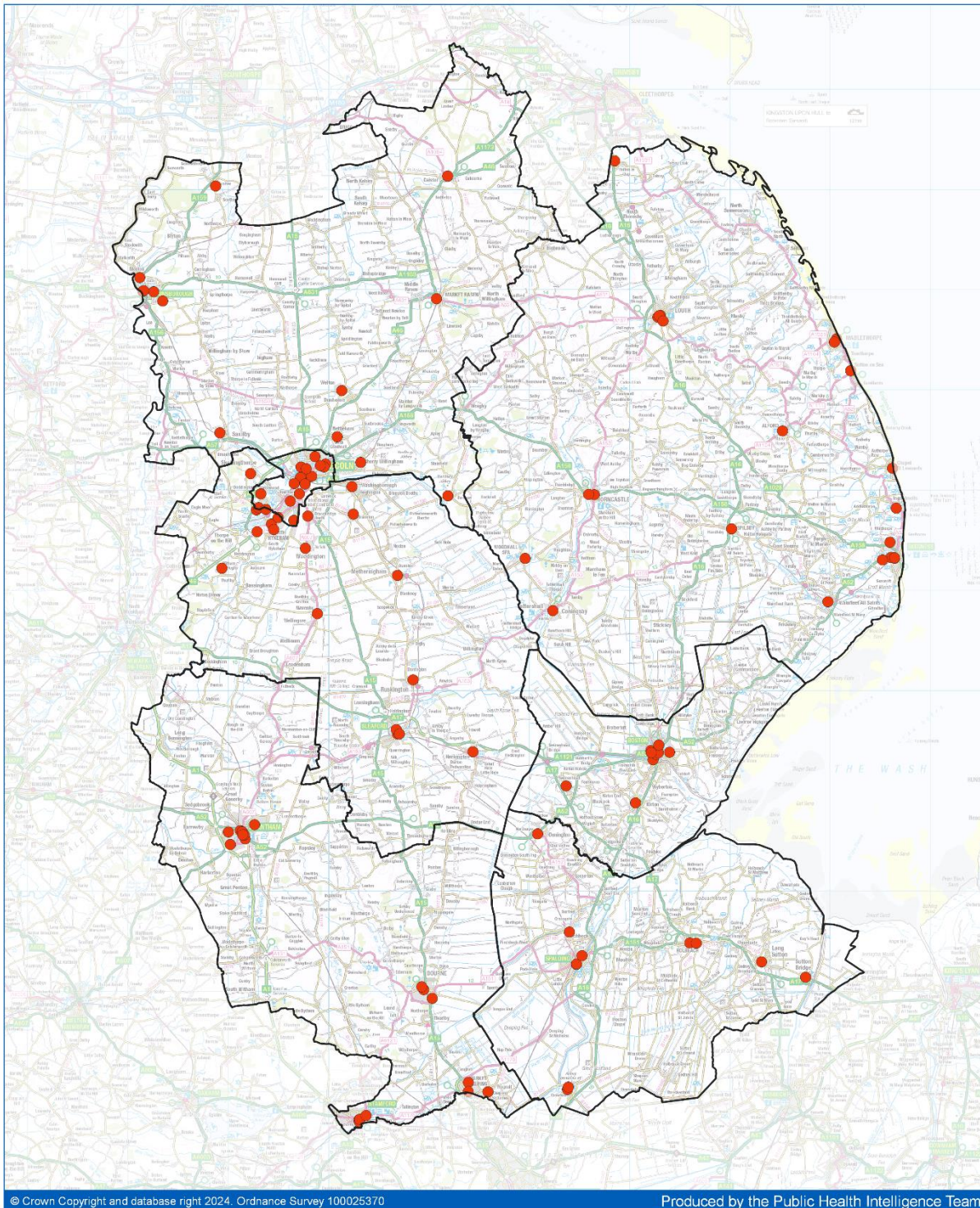
Page 44 | Table 9 [table updated]:

Summary of community pharmacies in Lincolnshire by District.

Area	Community Pharmacies	Population Census 2021	Community Pharmacies per 100,000 population
Boston	10	70,509	14.2
East Lindsey	24	142,301	16.9
Lincoln	19	103,812	18.3
North Kesteven	19	118,067	16.1
South Holland	10	95,117	10.5
South Kesteven	19	143,400	13.2
West Lindsey	14	95,146	14.7
Lincolnshire	115	768,352	15.0
England	11,075	56,490,059	19.6

Source: NHSEI, January 2024

Page 45 | Figure 6 [map updated]:
Location of community pharmacies and distribution in Lincolnshire.



Source: NHSEI, January 2024

Page 46 | Paragraph 3.1.1 | Sentence 1 [text updated]:

“Table 10 indicates that of the 115 community pharmacies in Lincolnshire, 114 (99%) have standard NHS contracts (40+ contracted hours), while 1 has a 100-hour contract and is therefore obliged to provide pharmaceutical services for at least 100 hours per week.”

Page 46 | Paragraph 3.1.1 | Sentence 2 [text updated]:

“As of 31st January 2024, there are 17 (15%) community pharmacy providers open beyond 7pm, Monday to Friday (excluding bank holidays), with three districts: Boston, South Holland and West Lindsey, having access to only one community pharmacy open in the evening.”

Page 46 | Table 10 [table updated]:

Summary (number and percentage of total in each district) of community pharmacy providers.

Area	Open 40 Hours		Open 100 Hours		Open Evenings	
	Number	%	Number	%	Number	%
Boston	10	100	0	0	1	10
East Lindsey	24	100	0	0	3	13
Lincoln	19	100	0	0	4	21
North Kesteven	18	95	1	5	3	16
South Holland	10	100	0	0	1	10
South Kesteven	19	100	0	0	4	21
West Lindsey	14	100	0	0	1	7
Lincolnshire	114	99	1	1	17	15

Source: NHSEI, January 2024

Page 46 | Paragraph 3.1.2 | Sentence 2 [text updated]:

“Of the 115 community pharmacies in Lincolnshire, 94 (82%) are open on Saturdays with 56 (49%) open in the morning and early afternoon till 2pm, 27 (23%) open in the late afternoon till 6pm and 11 (9%) open in the evening till 10pm or longer.”

Page 47 | Table 11 [table updated]:

Summary (number and percentage of total in each district) of community pharmacy providers open on weekends.

Area	Saturday		Sunday	
	Number	%	Number	%
Boston	6	5	2	2
East Lindsey	19	17	3	3
Lincoln	16	14	4	4
North Kesteven	17	15	4	4
South Holland	10	9	0	0
South Kesteven	16	14	3	3
West Lindsey	10	9	1	1
Lincolnshire	94	85	17	15

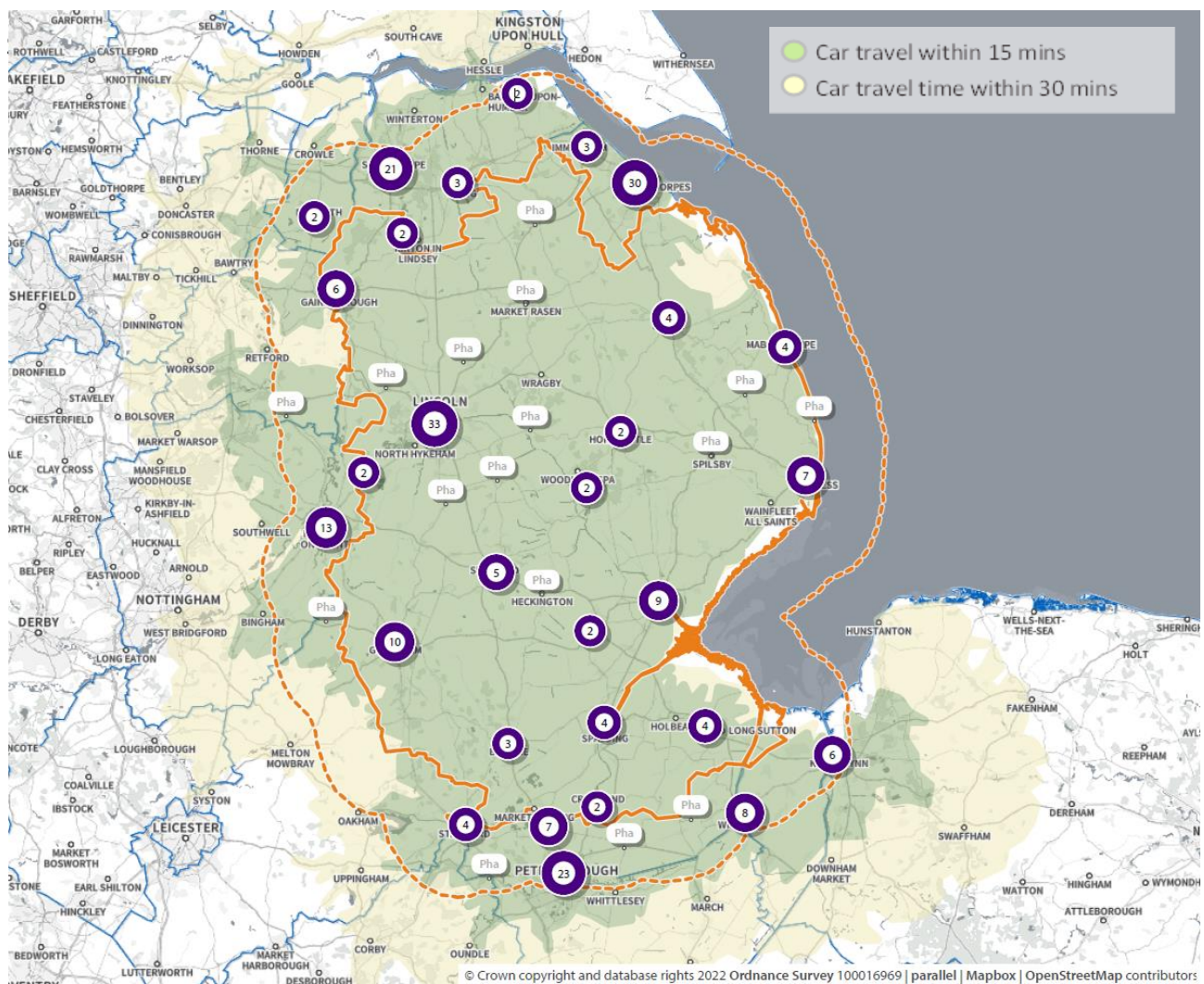
Source: NHSEI, January 2024

Percentage of resident population able to access community pharmacies within driving time boundaries.

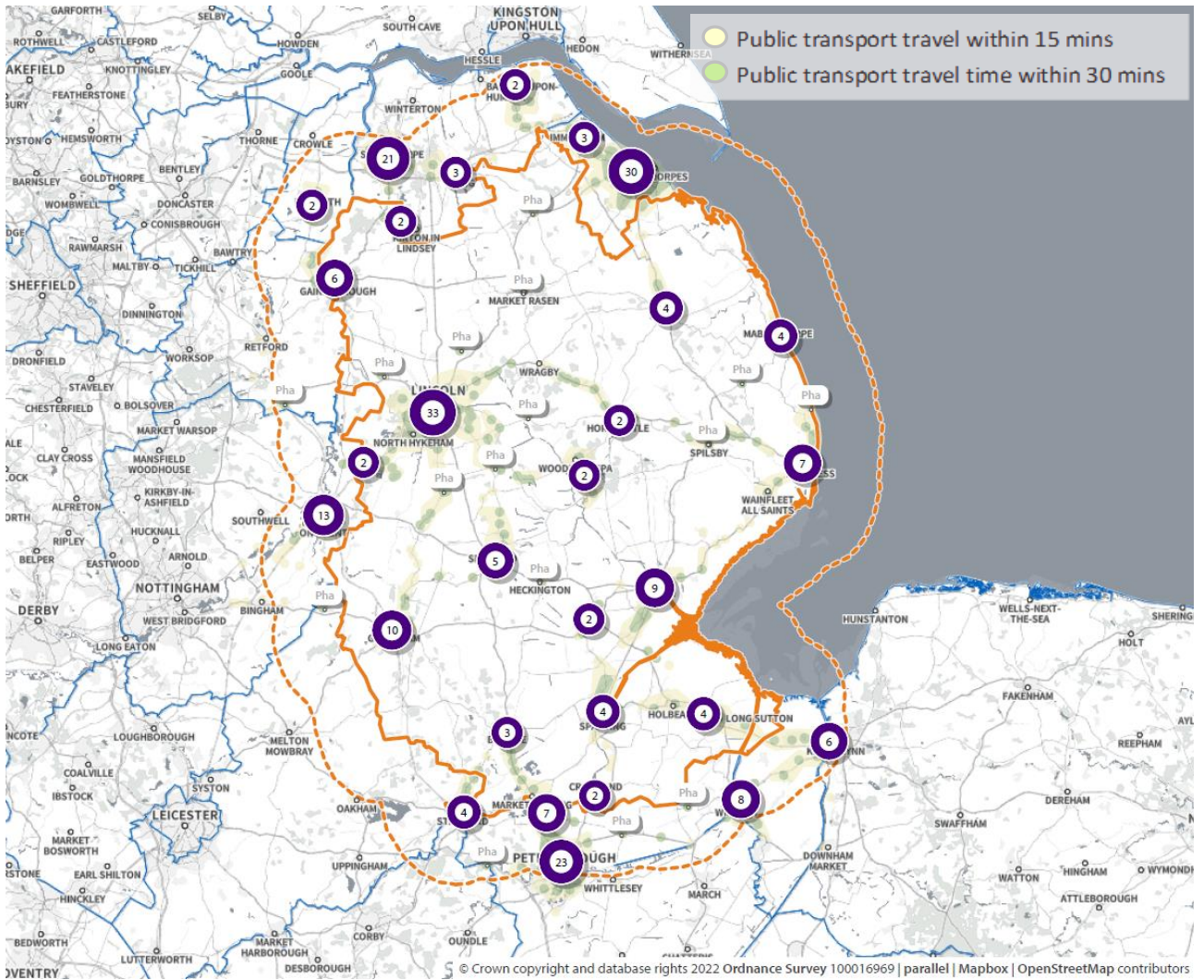
	Included Population	Proportion of Resident Population
All Pharmacies		
20 minutes	762,444	99.2
100 hour Pharmacies		
30 minutes	380,578	49.5
Weekend Pharmacies		
30 minutes	657,032	85.5

Source: SHAPE Place Atlas, January 2024

Car journey travel time to Lincolnshire community pharmacies.

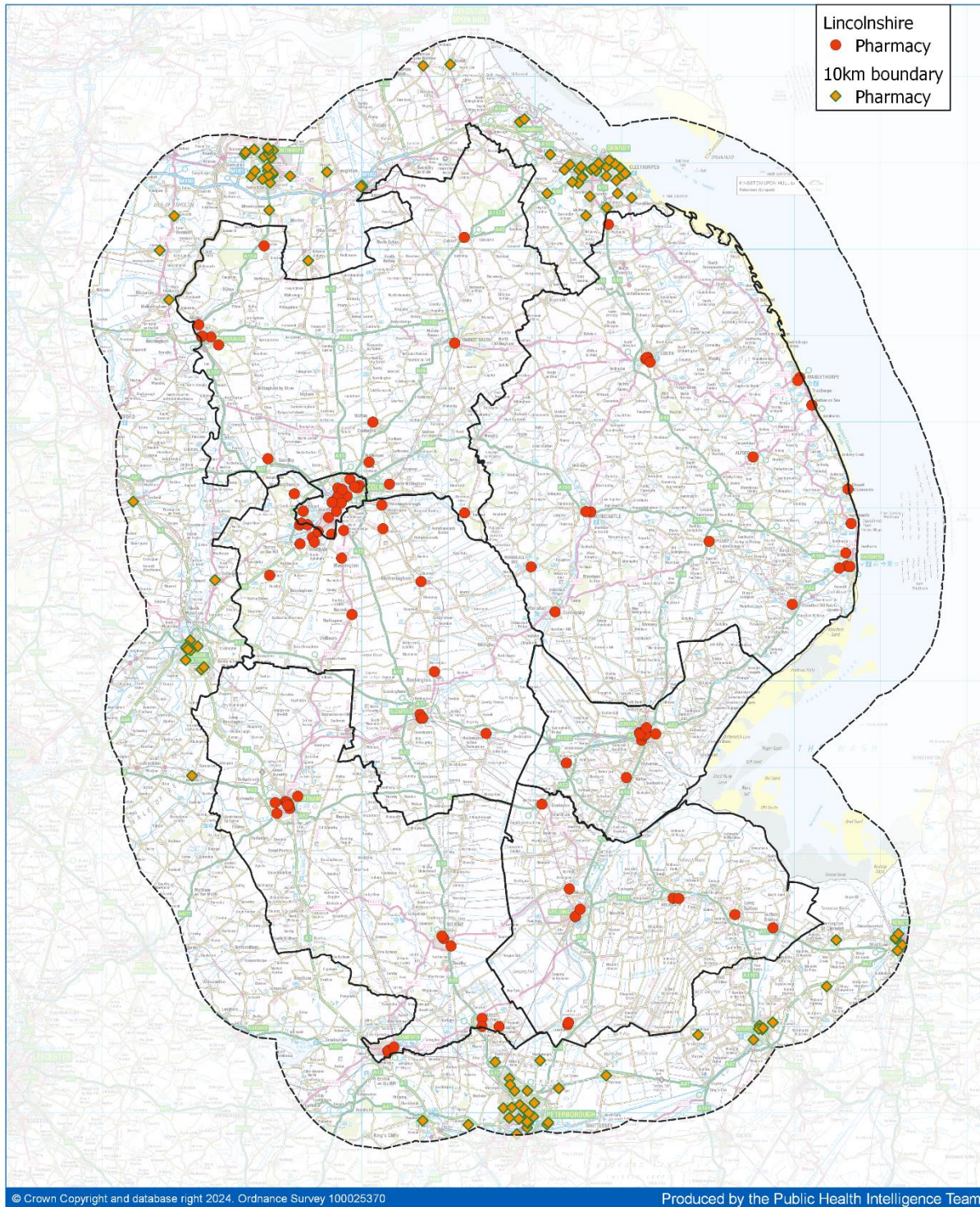


Page 50 | Figure 8 [map updated]:
Public transport travel time to Lincolnshire community pharmacies.



Source: SHAPE Place Atlas, January 2024

Page 52 | Figure 9 [map updated]:
Community pharmacies in and around Lincolnshire (10km boundary).



Source:

SHAPE Place Atlas, January 2024

Page 60 | Paragraph 6.1 | Sentence 1 [text updated]:

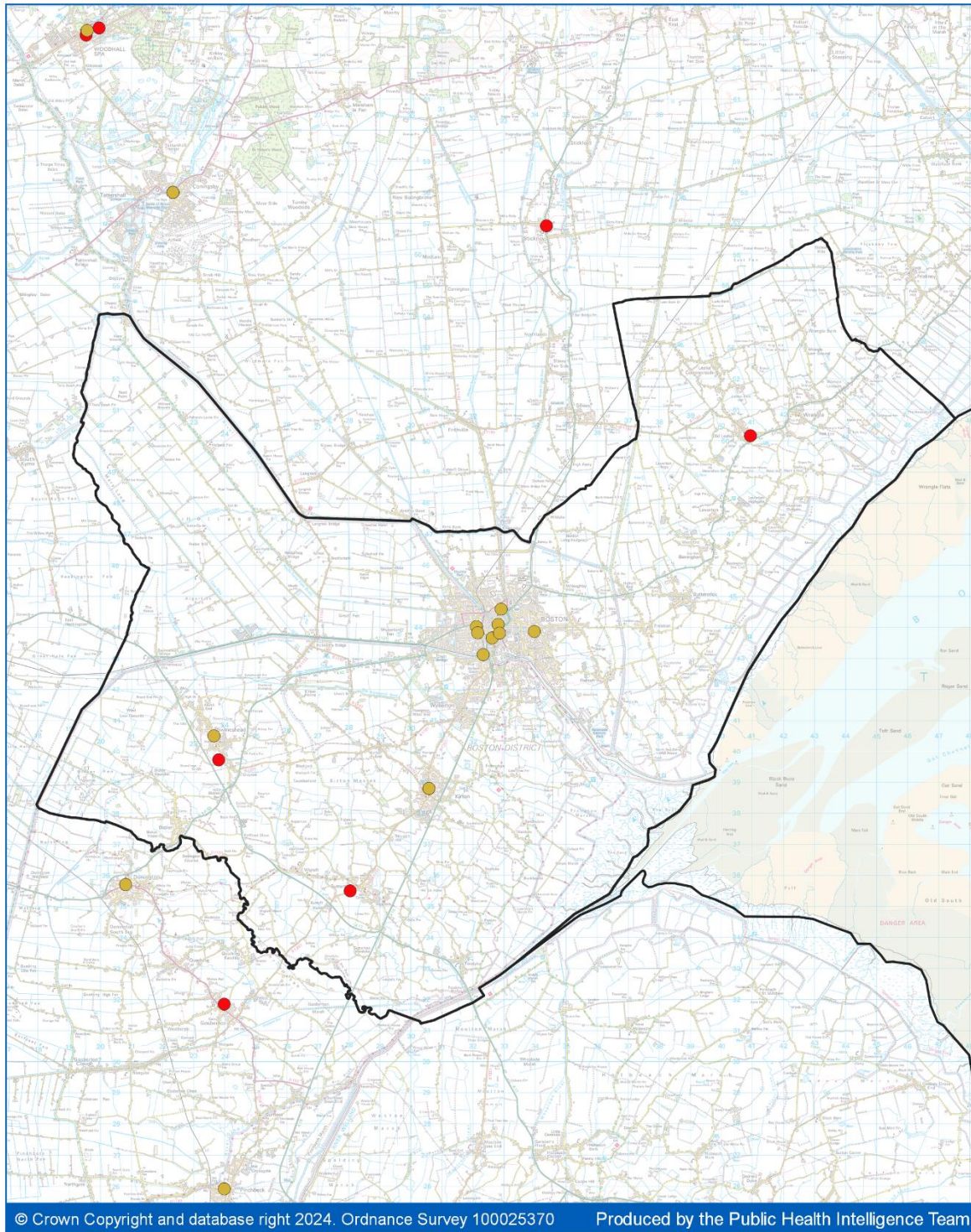
“The number of pharmacies in Lincolnshire (15.4/100,000) is lower than the England average (20.4/100,000).”

This page is intentionally left blank

Changes to Lincolnshire PNA Appendix 1

Appendix 1 | Page 2 [map updated]:

Community pharmacies and dispensing GP Contractors in Boston District.



Key

Lincolnshire

- Dispensing Practice
- Pharmacy

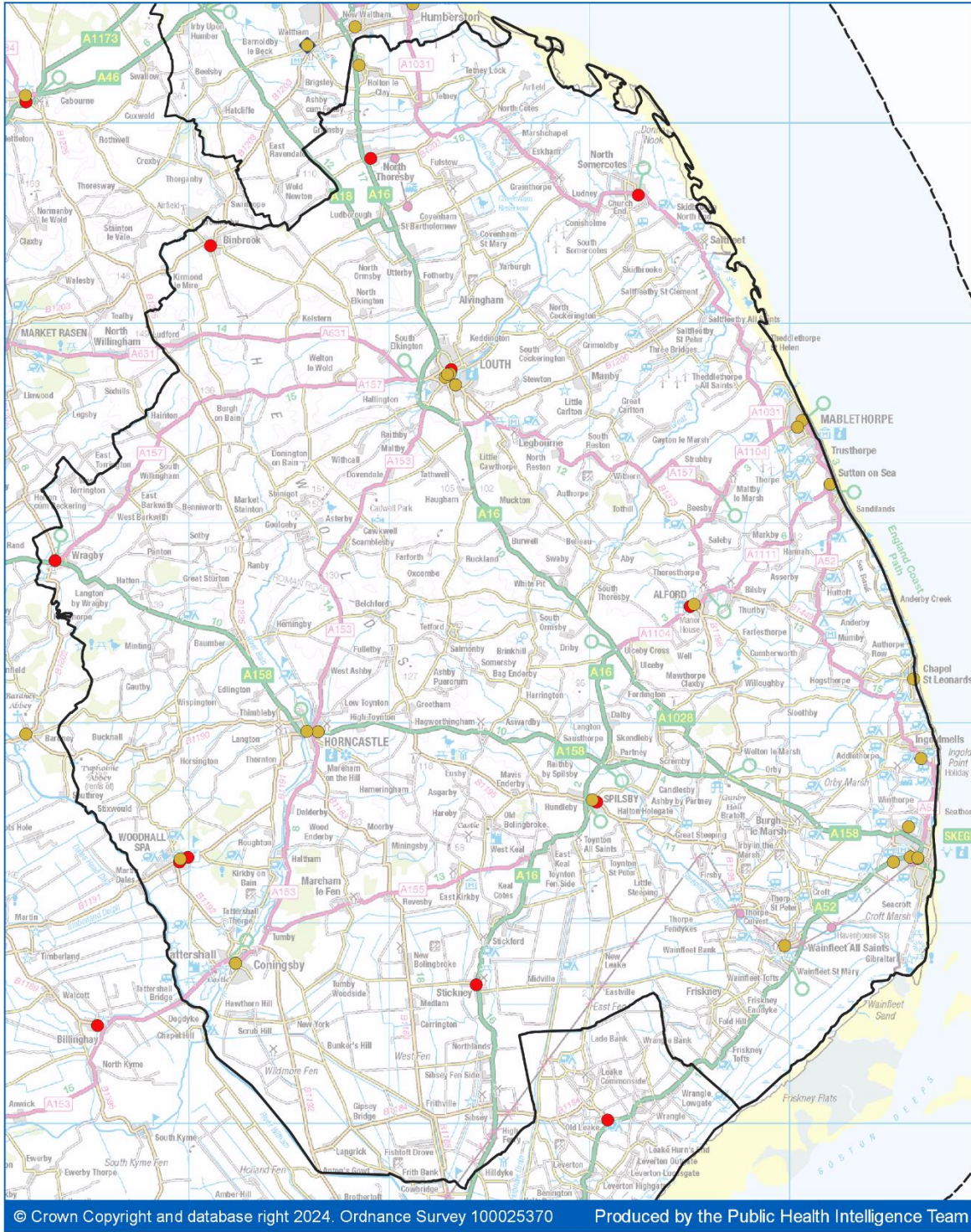
10km boundary

- ◆ Pharmacy
- ◆ Dispensing GP

District

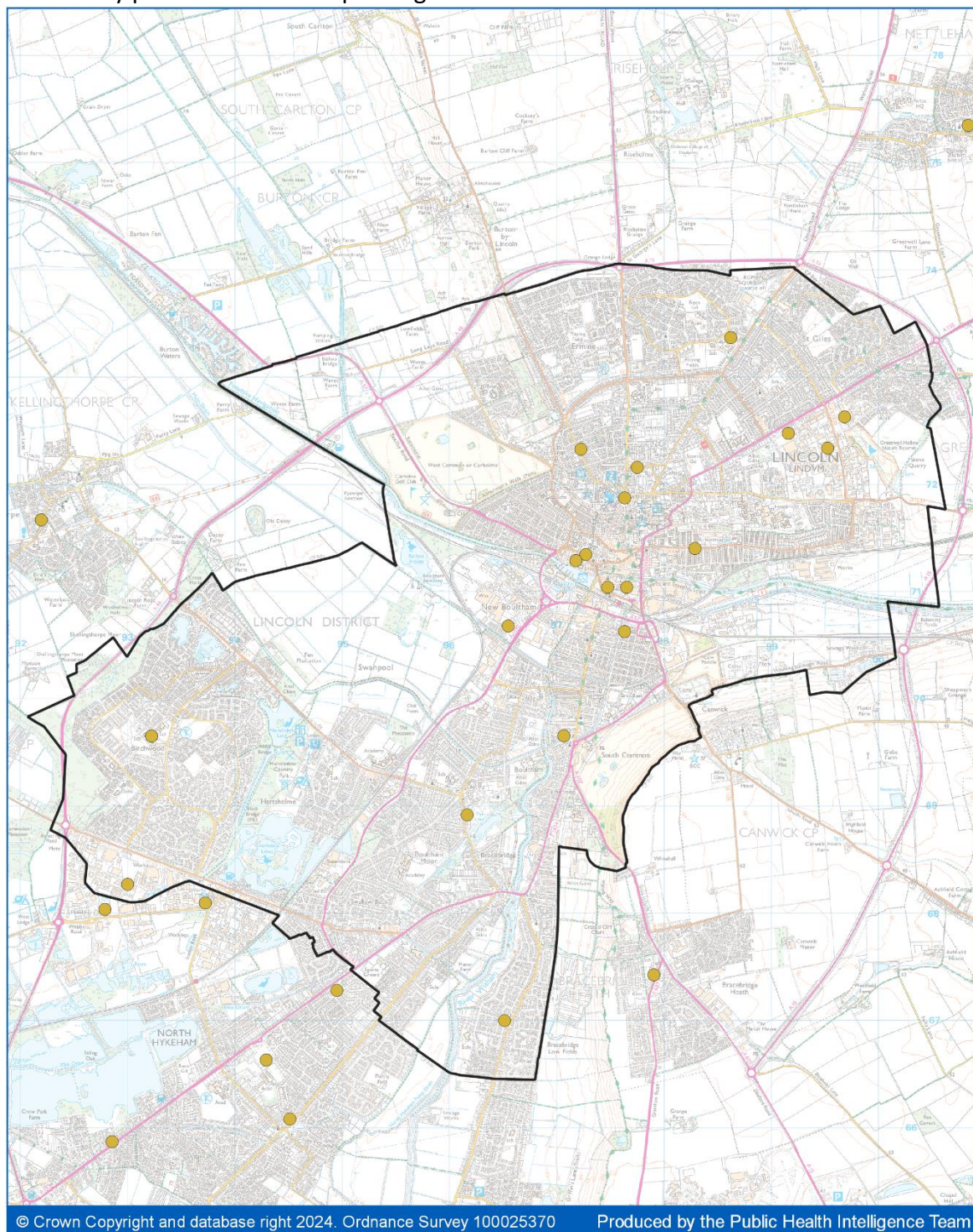
- District
- 10km buffer

Appendix 1 | Page 3 [map updated]:
 Community pharmacies and dispensing GP Contractors in East Lindsey District.



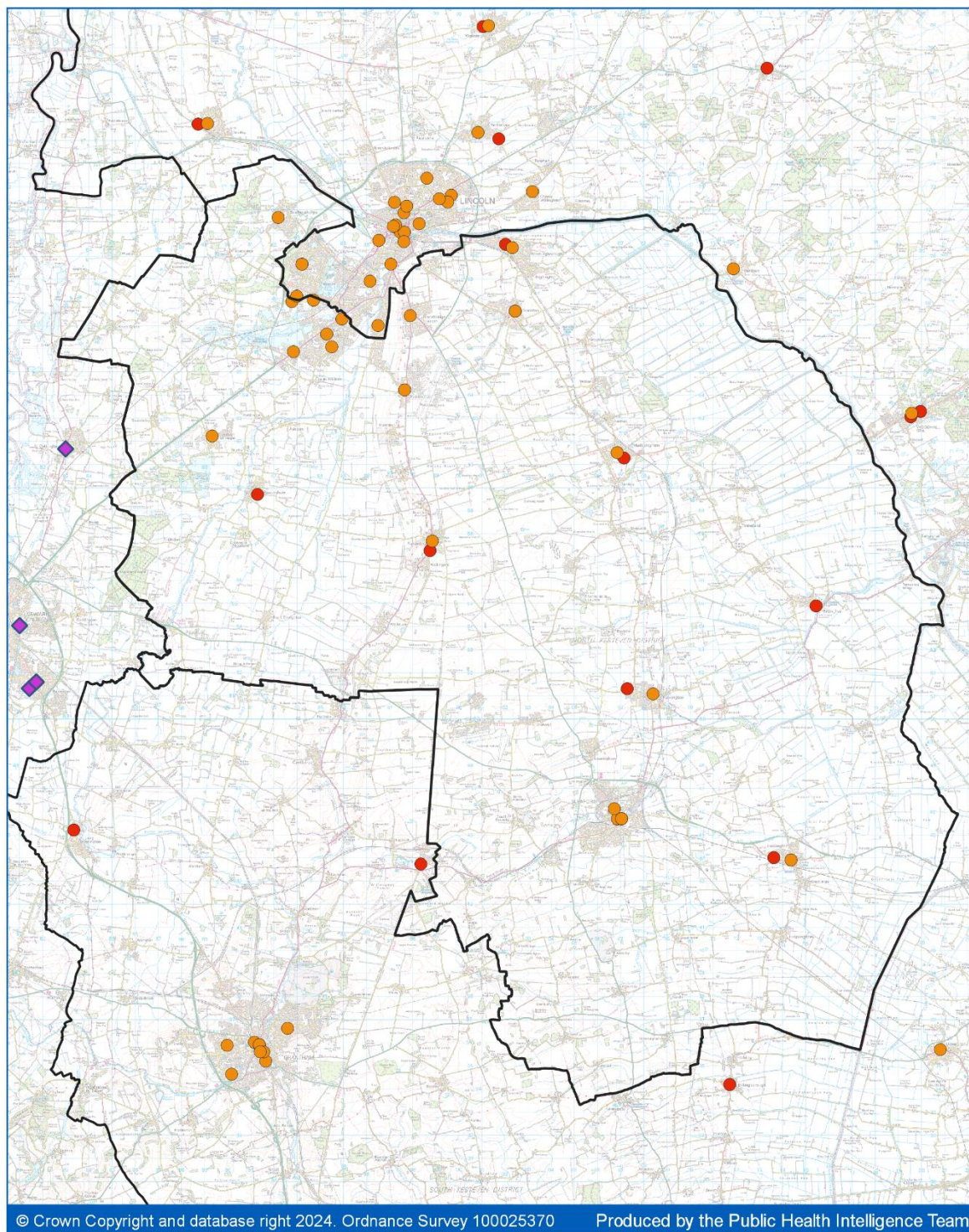
Key	Lincolnshire	10km boundary	District
	● Dispensing Practice	◆ Pharmacy	□ District
	● Pharmacy	◆ Dispensing GP	□ 10km buffer

Appendix 1 | Page 4 [map updated]:
 Community pharmacies and dispensing GP Contractors in Lincoln District.



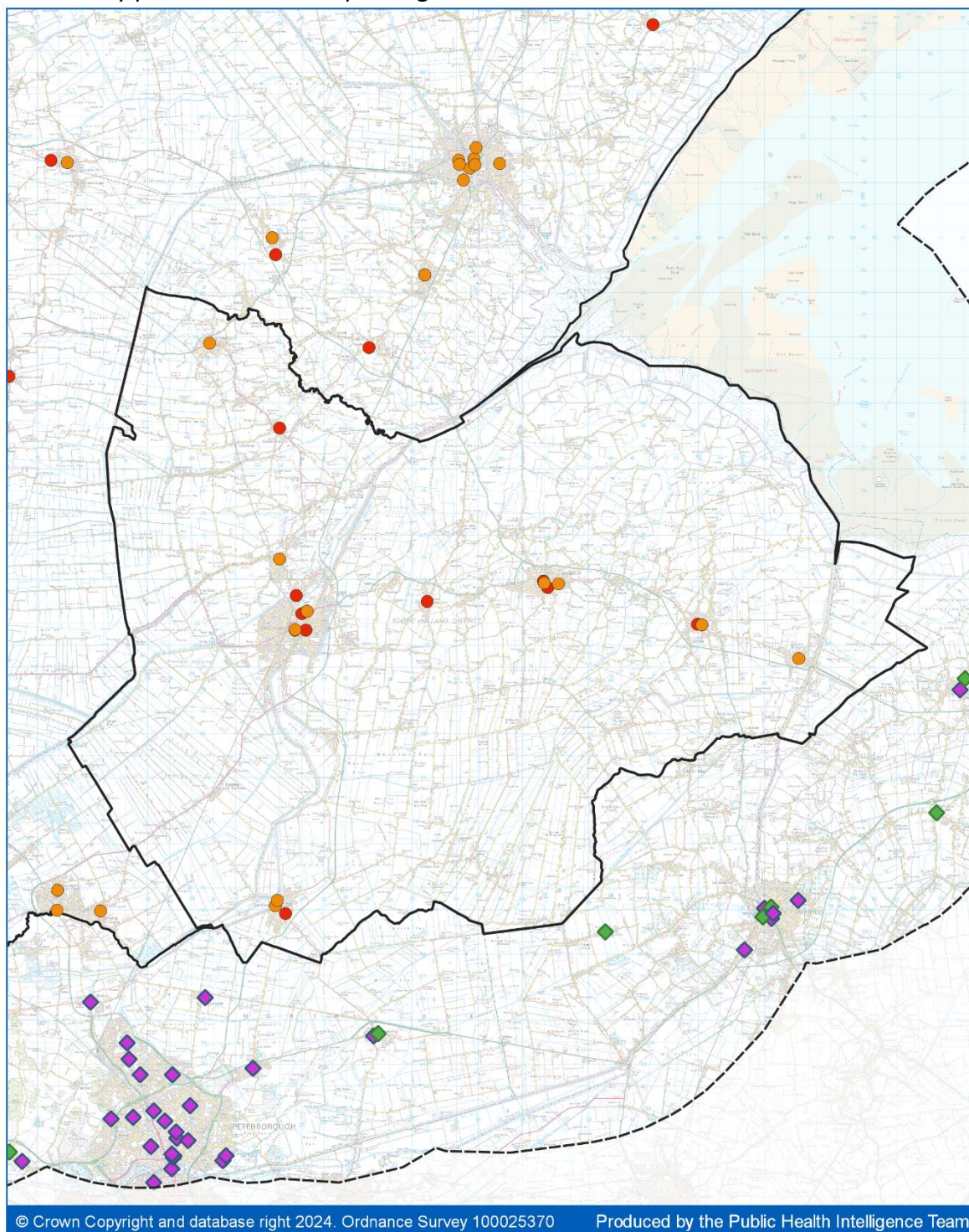
Key		Lincolnshire		10km boundary		District	
●	Dispensing Practice	◆	Pharmacy	◆	Pharmacy	□	District
●	Pharmacy	◆	Dispensing GP	□	10km buffer		

Appendix 1 | Page 5 [map updated]:
 Community pharmacies and dispensing GP Contractors in North Kesteven District.



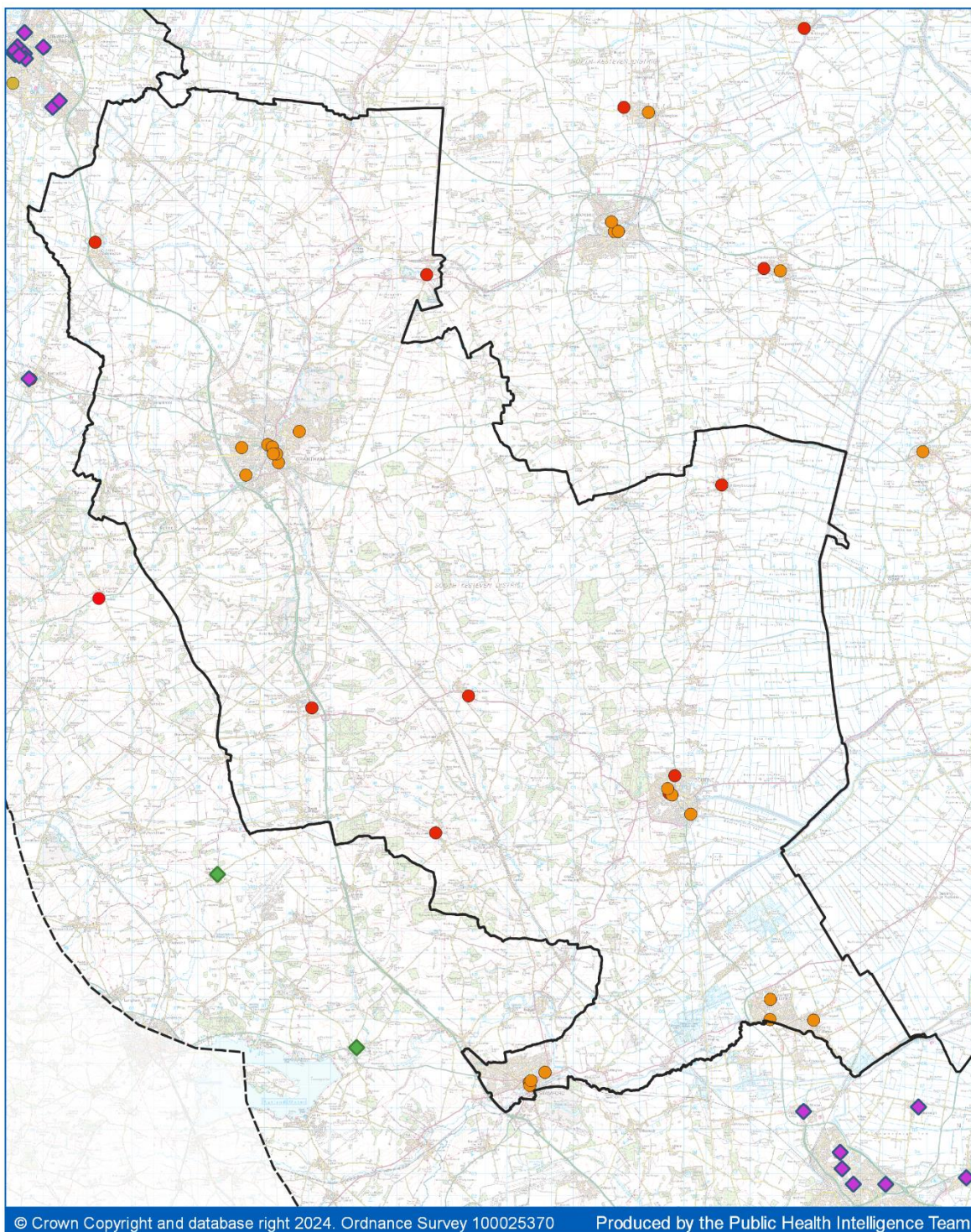
Key		Lincolnshire	10km boundary	District
●	Dispensing Practice	◆	Pharmacy	□
●	Pharmacy	◆	Dispensing GP	□
				□
				□

Appendix 1 | Page 6 [map updated]:
 Community pharmacies and dispensing GP Contractors in South Holland District.



Key		Lincolnshire	10km boundary	District
●	Dispensing Practice	◆	Pharmacy	▭
●	Pharmacy	◆	Dispensing GP	▭
				▭
				▭

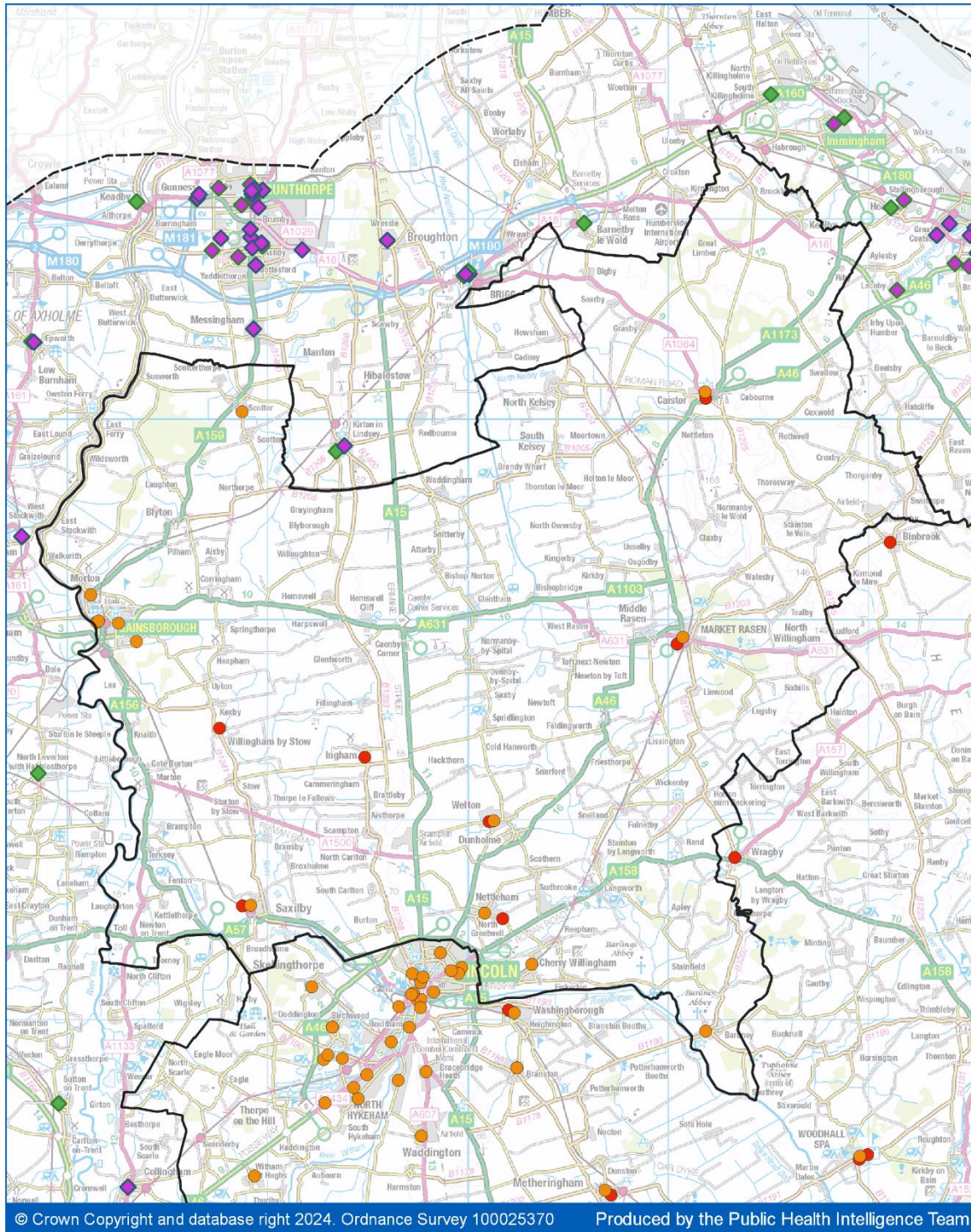
Appendix 1 | Page 7 [map updated]:
 Community pharmacies and dispensing GP Contractors in South Kesteven District.



© Crown Copyright and database right 2024. Ordnance Survey 100025370 Produced by the Public Health Intelligence Team

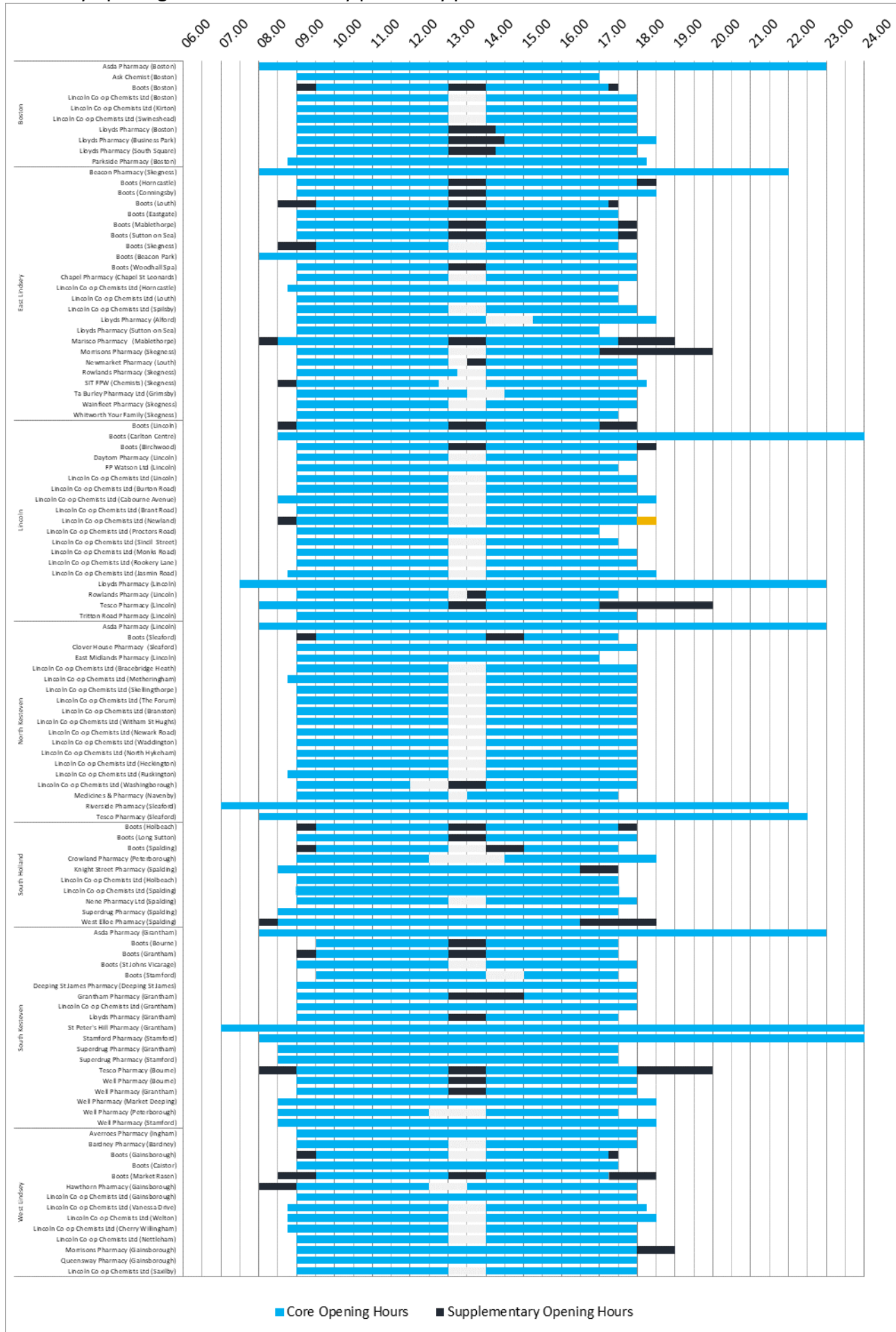
Key		Lincolnshire	10km boundary	District
●	Dispensing Practice	◆	Pharmacy	□
●	Pharmacy	◆	Dispensing GP	□
				□
				□

Appendix 1 | Page 8 [map updated]:
 Community pharmacies and dispensing GP Contractors in West Lindsey District.

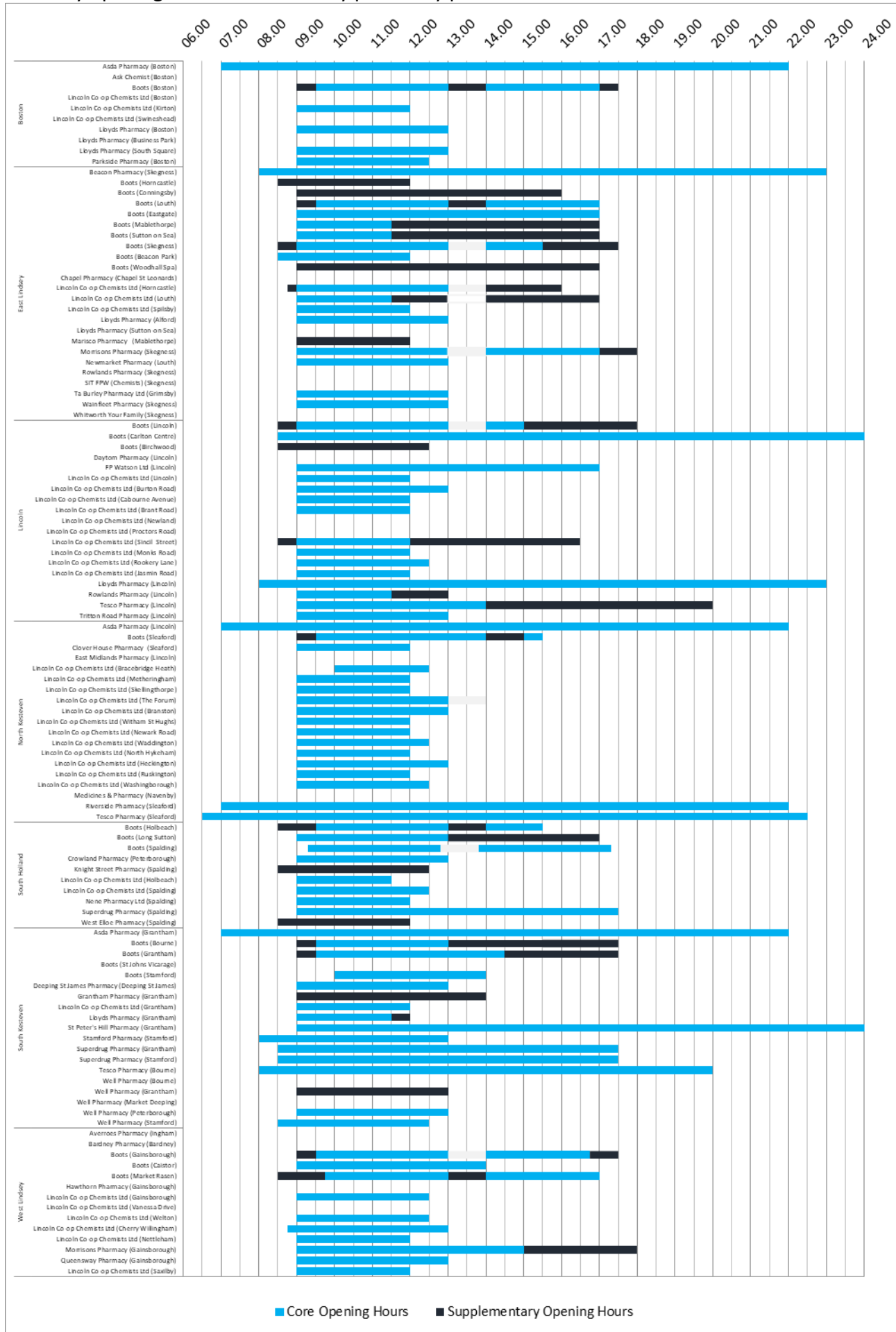


Key	Lincolnshire	10km boundary	District
● Dispensing Practice	◆ Pharmacy	— 10km boundary	▭ District
● Pharmacy	◆ Dispensing GP	— 10km buffer	

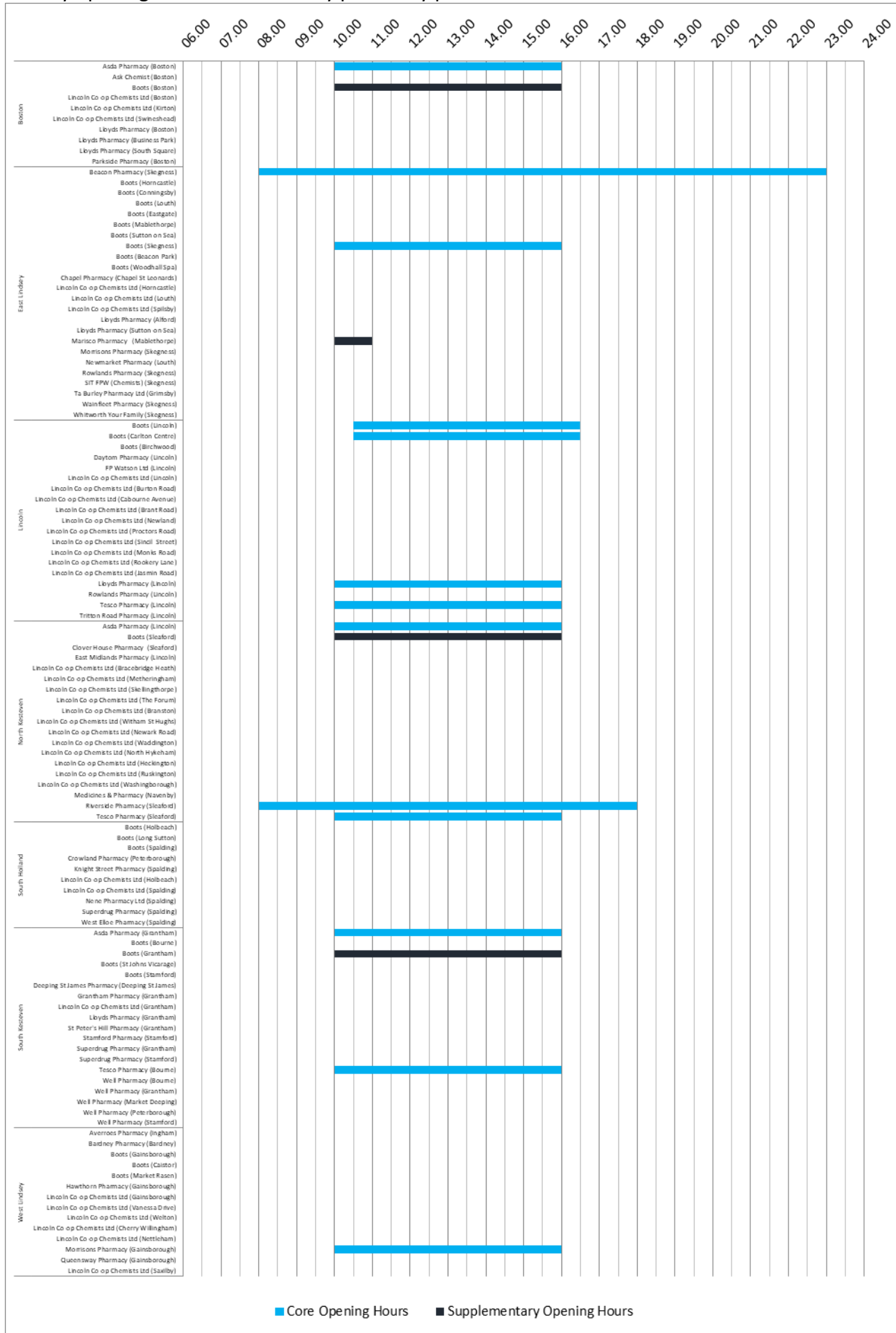
Appendix 1 | Page 9 [chart updated]:
 Weekday opening times of community pharmacy providers in Lincolnshire.



Appendix 1 | Page 10 [chart updated]:
 Saturday opening times of community pharmacy providers in Lincolnshire.



Appendix 1 | Page 11 [chart updated]:
 Sunday opening times of community pharmacy providers in Lincolnshire.



Supplementary statement prepared by Sarah Midgley, Public Health Analyst and Joshua Spindley, Trainee Public Health Analyst, Public Health Intelligence.

Information correct as of the 31 January 2024.